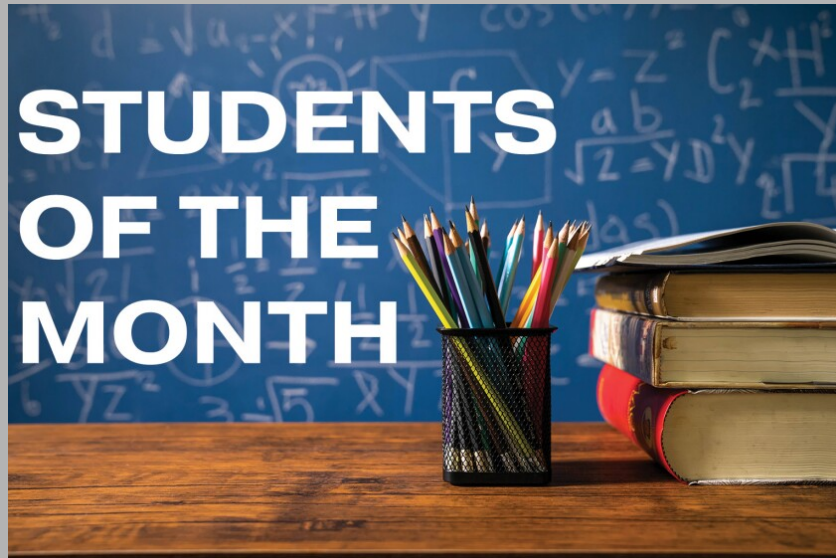




KITTATINNY REGIONAL HIGH SCHOOL NEWS & UPDATES

WEEK OF: January 29, 2024

Announcements



Congratulations to the following January Students of the Month:

Academic SOM (World Language):

Jared Begraft
Alexia Beltramine-Griffen
Rylee DeCamp

Fine Arts SOM:

Sarah Guthrie

Most Motivated SOM:

Daniela Rolon

SHARP Students of MP2:

Kyla Duncan
Clayton Doyle
Juliet Georges
Kinya Kajogo
Alyssa Levin
Dan Mauro
Daisy Michael
Andre Moquete
Alex Ochrym
Hanna Olsen
Brenna Philson

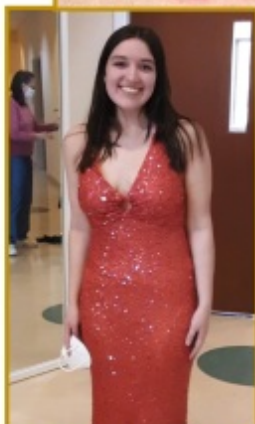
"Sister-to-Sister" Prom Shop!

Journey Family Success Center @ Project Self-Sufficiency

New and Gently-Used

- Prom Dresses
- Shoes
- Wraps
- Purses
- Accessories

FREE!



No Appointment Needed!



Sponsored by the Journey Family Success Center at Project Self-Sufficiency with the assistance of the Family Success Center Parent Advisory Board.

**April 4, 8, 9, 10, 11,
3-7pm**

**April 5 & 12,
3-5pm**

**April 6 & 13,
9am-1pm**

They got their dresses at the "Sister-to-Sister" Prom Shop—and you, can too!



Project Self-Sufficiency—127 Mill Street, Newton, NJ, 07860—973-940-3500

Yearbook Ads

The deadline for Senior or Jr High Recognition ads has been extended to February 8th. There will be no other extensions. If you still want to place an ad in

the yearbook:

HS ads:

https://www.jostens.com/apps/store/productBrowse/1056812/Kittatinny-Regional-High-School/2024-Yearbook/2023091904221578075/CATALOG_SHOP/

JRHS ads:

<https://www.jostens.com/apps/store/customer/2990296/Kittatinny-Junior-High-School/>

Scroll to Yearbook Recognition Ads and follow the prompts.

Don't forget to order your yearbook as well! That closes at the end of February.

Our students work so hard all year on this book. Thank you for supporting the KRHS Yearbook.

High School News

ROTARY SEEKS STUDENTS FOR 3 WEEK EXCHANGE WITH JAPAN

Rotary District 7475 is looking for students ages 15 to 18 to participate in a unique three-week trip to southern Japan. The Rotary Short Term Youth Exchange to Japan (STYE), now in its 46th year, provides an in-depth cultural experience that cannot be duplicated as a tourist.

If you know students who may be interested in this trip, please send this information to them.

The exchange is expected to depart Thursday, June 27, 2024, and return Thursday, July 18. (These dates may change by a day or two depending on airline schedules.) The trip gives students the opportunity to experience Japanese culture, interact with Japanese students and families, visit local high schools, participate in home-stays, and form friendships that will last a lifetime.

The group will visit major cities in southern Japan including Osaka, Kyoto, Nara and Hiroshima. The students will then move to the island of Shikoku where they will enjoy four home-stays with local Japanese Rotarian families.

This all-inclusive trip, which includes airfare, will cost the student \$3,950. Students are selected through an interview process which will take place in January and February. Applications are being accepted now. Interviews are scheduled based upon the order the applications are received.

For more information and the application form visit our website at:

<https://njrotary.org/SitePage/japan-youth-exchange>

Jr. High News

Cougar CAT Award

Congratulations to the following Junior High students who received a CAT award (Caring and Thoughtfulness) Award for the month of January. Sometime during the course of each month, faculty members will nominate a student(s) they have observed doing something that was caring or thoughtful for someone else. Thank you to the following students for making a positive influence on those around you each and every day here at Kittatinny.

Carmine Battaglia
Owen Beck
Luke Broderick
Ben Calache
Adelyn Cardinale
Olivia Clark



Kate D'Agostino
Shelby Jones
Meike Koch
Gia Lupo
Sydney McManus
Peyton Richards

PAW Program

Congratulations to the following Junior High students who received a PAW (Positive Attitude Winner) for the month of January. The PAW Program allows teachers to nominate students as many times as they wish when they witness positive actions occurring in their classrooms.

Nasim Chughatta
Juliet Georges
Victoria Hull
Mia Keiling



Chelsea Rivera
Paige Suljic
Madison Tanski
Trevor Vandergoot

Guidance News



SCHOOL COUNSELING

**NATIONAL
SCHOOL
COUNSELING
WEEK**

FEBRUARY 5-9, 2024

STUDENT-FOCUSED

STANDARDS-BASED

Next week is National School Counseling Week. Wishing all of our amazing counselors a great week! Thank you for all you do for our students, school and community!

Teacher Recommendations & Scheduling Information

At the end of day on Friday, February 9th you will be able to check your portal for your teacher recommendations. You will be able to find the information under the Course Request tab.

At that time, please review your academic courses to make sure you are scheduled for the correct level. College Prep (CP), Advanced College Prep (ACP), or Honors/Advanced Placement (H/AP) levels.

If you or your parents do not agree with a teacher's recommendation, please contact the teacher directly. You cannot register for an Advanced Placement/Honors level course without prior approval.

Grades 9-11 will be meeting with the counselors in their English classes to complete their course requests.

Grade 8 will be meeting individually with Mrs. Lasso to complete their course requests (you will receive a pass from your counselor). The meetings will begin on Monday, February 12 and run through Thursday, February 29. If you are absent on the day of scheduling you will receive a pass from your counselor to schedule individually.

SCHEDULE

Grade 11 - February 12 and 13
Grade 10 - February 14
Grade 9 - February 15 and 16
Grade 8 - February 12 - February 29

*Make up days February 20 - 24 (in the event of a snow day, we will resume the schedule the following day.

7th grade students will be scheduled after the 3rd MP- More information will be out at a later date.

KRHS Guidance Department

February is Black History Month

Black History Month is a time to celebrate African Americans' achievements and contributions throughout history. This year's theme focuses on Black resistance and how Black communities have fought for their freedoms, against all forms of racism and oppression. Through slavery, segregation, poverty, and the fight for equal rights, the Black community has stood strong and persevered.

To this day, inequalities in our community persist. Black Americans are more likely to live below the poverty line than their white counterparts. They are less likely to have health insurance coverage leading to many not receiving necessary physical and mental health care.

Every day, the Black community continues to work diligently toward a brighter future for the next generations.

At Kittatinny Regional High School, we believe every person has the right to equitable access to care. We partnered with Care Solace to support the well-being of our students, staff, and family members, regardless of circumstances.

If you or someone you know needs help with mental health or substance use challenges, Care Solace will help you navigate the process and find the best options. If you would like to use Care Solace to help you find a provider:

Call 888-515-0595. Multilingual support is available 24/7/365.

Visit caresolace.com/krhs and either search on your own OR click "Book Appointment" for assistance by video chat, email, or phone.

Care Solace is a complimentary and confidential service provided by Kittatinny Regional High School.

Through discussion and action, let's shine a light on the multiple facets of Black resistance and perseverance against all odds. There is so much to uncover, amplify, question, and correct, and while we continue to take action every day, we share with you the following words of wisdom:

"Turn your wounds into wisdom" - Oprah Winfrey

"If there is no struggle, there is no progress" - Frederick Douglass

"If you prioritize yourself, you are going to save yourself." - Gabrielle Union

Mes de la Historia Negra

El Mes de la Historia Negra es un momento para celebrar los logros y las contribuciones de los afroamericanos a lo largo de la historia. El tema de este año se centra en la resistencia negra y cómo las comunidades negras han luchado por sus libertades y contra todas las formas de racismo y opresión. A través de la esclavitud, la segregación, la pobreza y la lucha por la igualdad de derechos, la comunidad negra se ha mantenido firme y perseverante.

Hasta el día de hoy, persisten las desigualdades en nuestra comunidad. Los estadounidenses negros tienen más probabilidades de vivir por debajo del umbral de la pobreza que sus homólogos blancos. Es menos probable que tengan cobertura de seguro de salud, lo que hace que muchos no reciban la atención de salud física y mental necesaria. Todos los días, la comunidad negra continúa trabajando diligentemente hacia un futuro más brillante para las próximas generaciones.

En Kittatinny Regional High School, creemos que todas las personas tienen derecho a un acceso equitativo a la atención. Nos asociamos con Care Solace para apoyar el bienestar de nuestros estudiantes, personal y familiares, independientemente de las circunstancias.

Si usted o alguien que conoce necesita ayuda con problemas de salud mental o uso de sustancias, Care Solace lo ayudará a navegar en el proceso y encontrar las mejores opciones. Si desea utilizar Care Solace para encontrar un proveedor:

Llame al 888-515-0595. El soporte multilingüe está disponible las 24 horas del día, los 7 días de la semana, los 365 días del año.

Visite caresolace.com/krhs y busque por su cuenta o haga clic en "Reservar cita" para obtener asistencia por video chat, correo electrónico o teléfono. Care Solace es un servicio gratuito y confidencial proporcionado por Kittatinny Regional High School.

A través de la discusión y la acción, arrojemos luz sobre las múltiples facetas de la resistencia y la perseverancia negra contra viento y marea. Hay mucho por descubrir, ampliar, cuestionar y corregir, y mientras continuamos tomando medidas todos los días, compartimos con ustedes las siguientes palabras de sabiduría:

"Convierte tus heridas en sabiduría" - Oprah Winfrey

"Si no hay lucha, no hay progreso" - Frederick Douglass

"Si te priorizas, te vas a salvar". —Gabrielle Unión

Cougar Athletics

KRHS Weight Room Fundraiser

SCAN TO SHOP



KRHS WEIGHT ROOM
FUNDRAISER

online ordering
all year round



VISIT OUR WEBSITE

TWENTYFOURINK.COM/COLLECTIONS/KITTATINNY-WEIGHT-ROOM

Reminders

Special Education Parent Advisory Group

We are looking for volunteers to be a part of our Special Education Parent Advisory Group (SEPAG). It is a volunteer group of parents and guardians that provides input to the district as well as support and information to parents and caregivers of children with special needs. If interested, please click the button below.



What is SEPAG?

It is an advisory group that is a state-mandated, district-level, parent-driven group charged with providing input to the local school district on system-level challenges in special education and related services.

What SEPAG is not?

It is not an advocacy assistance group, a support group, or a special education parent-teacher organization.

Kittatinny SEPAG Mission Statement

The mission of the Kittatinny Education Parent Advisory Group (SEPAG) is to provide a forum for parents of children with special needs to discuss current practices, policies, services, and programs that have a direct impact on students with disabilities. The Kittatinny Education Parent Advisory Group (SEPAG) meets to collaborate with the district's Director of Student Services of Special Education to ultimately develop and implement programs that meet the needs of special education students and families in the district. Kittatinny Education Parent Advisory Group (SEPAG) offers the opportunity to raise questions, to voice your concerns, and to provide direct input regarding support services. Kittatinny Education Parent Advisory Group (SEPAG) also provides parents and families opportunities to learn about district programs, services and resources.

[SEPAG Letter](#)



HAMPTON TOWNSHIP
EDUCATIONAL FOUNDATION

EDUCATION - GRANTS
COMMUNITY - SCHOLARSHIPS

COME OUT AND SUPPORT!

HTEF'S WINTER DINNER DANCE



SATURDAY
MARCH 2ND, 2024



DOORS OPEN
5:30 PM - BAND UNTIL 10PM



THE BARN @ HILLSIDE PARK
146 LAKE ILIFF RD., NEWTON

JOIN THE HAMPTON TOWNSHIP EDUCATIONAL FOUNDATION FOR OUR WINTER FUNDRAISER FEATURING THE SNAKE OIL WILLIE BAND!

TICKETS INCLUDE DINNER, OPEN BAR AND MUSIC. DINNER SERVICE STARTS AT 6:15PM.

EARLY BIRD!

\$50 PER PERSON UNTIL JAN. 31ST! SINGLE TICKET
PRICES INCREASE TO \$60 STARTING FEB. 1ST.



ORDER YOUR TICKETS VIA QR CODE
OR LINK BELOW:

<http://tinyurl.com/HTEFDinnerDance>



Order Tickets
Here!

Kittatinny Adult School

Dear Kittatinny Parents:

Kittatinny Adult School will be offering evening classes beginning February 20, 2024. Attached for your convenience is the brochure. The Kittatinny Adult School brochure can also be viewed on Kittatinny's website @ <https://www.krhs.net/> on the home page under News & Announcements or click on the Community Links tab then Adult School. The mail-in registration form can be printed out for the following classes:

- Body Sculpting
- Expressing Yourself with Watercolors

- Are You Ready to Start Your Own Business?
- Investments and Creating Retirement Income
- 50 Common French Phrases to Know for Travel & Everyday Life

If you have any questions or need additional information, please contact 973-383-1800, ext. 1290.

Spring 2024 Adult School
Brochure



Kittatinny Education Foundation

The Kittatinny Education Foundation (**KEF**) would like to invite all members of the Kittatinny School Community, which includes current Cougar Parents, Cougar Alumni, and parents of our Cougar Alumni, to join in our efforts to enhance the educational opportunities for all of our students in the Kittatinny School District and to engage the entire community in philanthropic giving that strengthens our public schools, supports our teachers, and inspires our students.

The **KEF** is a philanthropic Non-profit 501-3C organization whose goals are to raise private funds **which are tax deductible donations**. These funds will assist in helping to provide the excellent programs that Kittatinny has long been known for in our school and around our campus. This funding will help offset the loss in aid that we have experienced over these last five years due to state aid cuts and will allow our school and programs to thrive. Our vision is to provide our School Community with the same quality programs and facilities that are a hallmark of Kittatinny, by raising money through sponsorships, private donations, and fundraising events. These fundraising events will become regular opportunities to reconnect and have some fun with former Kittatinny Cougar families as well as our current Cougar families. Although some of us have moved away, many in our Cougar Community still live in our area and we hope that ALL of our Cougar Family, near and far, would enjoy an opportunity to reconnect with our Cougar Nation!

If you are interested in getting involved with and want to help the **KEF** please send your email and cell phone information to:

Mrs. Jane Meyers (Jane Meyers)

jjunoir@krhs.net

or

Dr. Craig Hutcheson

chutches@krhs.net

We thank you for everything you do for the Kittatinny Community and we hope to connect with everyone very soon!

With Warm Regards,

The Kittatinny Education Foundation

Please Check the Parent Portal for Student Obligations

Dear Kittatinny Parents/Guardian:

Please log onto your Parent Portal to see if your child has any outstanding obligations, including negative cafeteria balances, for the 2023-2024 school year. If the obligation is not met by Thursday, January 18, 2024 the following will be withheld until any and all obligations have been fulfilled:

- Student's grades and report card information (withheld)

You can access your Parent Portal using the following URL:

<https://www.fridayparentportal.com/kittatinny> or through the Kittatinny website @ www.krhs.net, click on the Parent tab and then the Parent Portal.

- **Outstanding Fees:** Once on the Parent Portal, scroll down under Menu and click on "Fines." If your child has an outstanding obligation, it will be displayed on the "Fines" page.
- **Negative Cafeteria Balances:** Once on the Parent Portal under Menu, click on "Food Services" to view your child's account. If your child has a negative cafeteria balance, you have been receiving weekly notifications on the amount due.

You can either send in a check made payable to KRHS for the outstanding obligation or pay online with PaySchools Central @ <https://payschoolscentral.com/>. If you have not registered for a PaySchools account, you will find the PaySchools Central account setup guide through Kittatinny's website @ www.krhs.net, click on the Parent tab, Parent Resources then Payschool.

* Technology fee cannot be paid online through PaySchools. Please send in payment of cash or check made payable to KRHS.

Any questions, please feel free to contact:

Colleen Chiariello, x1610: Activity fee/Negative Cafeteria balances

Rob Erlemann, x1550 (IT Department): Technology fee

April Orozco, x1440: Athletic fee

Cindy Bizik, x1290: All other fees

National Assessment of Educational Progress (NAEP)

Attention Senior Parents and Senior Students:

Kittatinny Regional High School will participate in the National Assessment of Educational Progress (NAEP) on Tuesday, February 27, 2024. If you have been selected to participate in the NAEP, you will receive a Notification Letter in the mail. NAEP is the largest nationally representative and continuing assessment of what students know and can do in various subjects. NAEP is administered by the National Center for Education Statistics, within the U.S. Department of Education. NAEP is different from our state assessments because it is a common measure of achievement across the country. The results are released as The Nation's Report Card, which provides information about student achievement to educators, parents/guardians, policymakers, and the public.

Your child (will/may) take a mathematics, reading, or science assessment. In addition to subject-area questions, students voluntarily complete NAEP survey questions. These questions provide valuable information about participating students' educational experiences and opportunities to learn both in and outside of the classroom. More information about NAEP survey questions is available at

<https://nces.ed.gov/nationsreportcard/parents> under the section "What Questions Are on the Test?"

The assessment takes about 120 minutes for most students, which includes transition time, directions, and completion of survey questions.

The information collected is used for statistical purposes only.

- Your child's grades will not be affected.
- Students may be excused for any reason, are not required to complete the assessment, and may skip any question.
- While the assessment is voluntary, NAEP depends on student participation to help policymakers improve education. However, if you do not want your child to participate, please notify me in writing by Monday, January 22, 2024.
- Upon completion of the assessment, NAEP participants will receive a Certificate of Community Service.

There is no need to study in preparation for NAEP, but please encourage your child to do their best. Contact Sharon Falchetta at 973-383-1800, ext. 1270 or at sfalchet@krhs.net if you have any questions.

It is exciting that Kittatinny is participating in NAEP. I am sure that Kittatinny Regional High School's students will show what our nation's students know and can do.

National Center for Education Statistics (NCES) conducts the National Assessment of Educational Progress to evaluate federally supported education programs. All of the information you provide may be used only for statistical purposes and may not be disclosed, or used, in identifiable form for any other purpose except as required by law (20 U.S.C. §9573 and 6 U.S.C. §151). By law, every NCES employee as well as every NCES agent, such as contractors and NAEP coordinators, has taken an oath and is subject to a jail term of up to 5 years, a fine of \$250,000, or both if he or she willfully discloses ANY identifiable information about you. Electronic submission of your information will be monitored for viruses, malware, and other threats by Federal employees and contractors in accordance with the Cybersecurity Enhancement Act of 2015.

What Every Parent
Should Know About NAEP

Certificate of Community
Service

THE KITTATINNY PLAYERS

present



Disney
**BEAUTY
AND THE
BEAST**

THE BROADWAY MUSICAL

©Disney

THURSDAY, MARCH 14, 2024

7:07 PM

FRIDAY, MARCH 15, 2024

7:07 PM

SATURDAY, MARCH 16, 2024

1:23 PM

AT KITTATINNY REGIONAL HIGH SCHOOL

77 HALSEY RD, NEWTON, NJ 07860

FOR ADDITIONAL INFO AND TO PURCHASE TICKETS:

www.KittatinnyPlayers.com

Lifeguards Wanted!

Basic Lifeguard Certification Required

Contact Todd VanOrden, Athletic Director

tvanorde@krhs.net

Kittatinny Regional High School

School Device Coverage

Kittatinny Regional School District

Protect Your School Device!

Covering Accidental Damage, Loss and Theft.



Unlimited Claims, Full Transferability, with No Deductibles and No Hidden Fees!



Sign Up Online Now at <https://schooldevicecoverage.com/>

Student Device Insurance Coverage August 21, 2023 -June 14, 2024

Dell, Lenovo, HP Chromebook	Cost of insurance	OR	Replacement cost without insurance
	\$25.00		\$100.00-\$300.00
	Unlimited Claims, 0 Deductibles		Replacement Cost

*Does not cover accessories, unless specified. In order to take advantage of this opportunity, coverage must be purchased within 30 days of receiving your device. Credit card payments are subject to a 4% processing fee. **Coverage excludes known damage/losses which are present at the time of purchase.

Kittatinny Regional School District

Student Name: _____ School: _____

Grade Level: _____ Parent Name: _____

Mailing Address: _____ City: _____ State: _____ Zip: _____

Home Phone: _____ Cell Phone: _____

Email (Mandatory): _____ *Unit Serial Number: _____
(Policy Documents are emailed)

Date: _____ Signature: _____

Sign Up & Buy Online:
<https://schooldevicecoverage.com/signup>

Call/Questions:
1.888.978.3515

Mail a check with this form to:

School Device Coverage
3390 Auto Mall Drive
Westlake Village, CA 91362

- Checks need to be payable to: School Device Coverage
- Payments cannot be made over the phone

Simple Claims Process:

Go to <https://schooldevicecoverage.com/login> to log into your account and file a claim.

License #0E61972. U-PIC Insurance Services, Inc. All rights reserved. School Device Coverage is a trademark of U-PIC Insurance Services, Inc.



Printable Flyer

Coverage Website

Kittatinny Assessment Testing Schedule 2023-24

Test	Dates	Resources

LinkIt Benchmark B (ELA, Math, Science)	January 29 - February 2, 2024 Grades 7-11 (approximately 60 minutes)	
National Assessment of Educational Progress (NAEP)	February 27, 2024 Grade 12	https://www.nj.gov/education/assessment/naep/
PSAT 9	March 5, 2024 Grade 9	https://satsuite.collegeboard.org/psat-8-9
NJPGA (ELA, Math)	March 11-15, 2024 (makeups March 18 - 22, 2024) Grade 11	https://nj.mypearsonsupport.com/ForParent/
LinkIt Benchmark C (ELA, Math, Science)	April 22-25, 2024 Grades 7-11 (approximately 60 minutes)	
Dynamic Learning Maps (DLM) Year End (YE) Model: ELA, Math & Science	April 29 - May 17, 2024	https://dynamiclearningmaps.org/sites/default/files/documents/StateBonusItems/Parent_Brochure.pdf
Advanced Placement (AP) Eng. Lit., Eng. Lang, Calc AB, Calc BC, Chem, Computer Science A, Computer Science Principles, Drawing, 2D, 3D, Enviro, Euro, Macroeconomics, Precalc, Physics 1, Physics C Mechanics, Physics C Electricity & Magnetism, Stats, US Gov, US History, World History	May 6 - May 17, 2024 (makeups May 22,23,24) Grades 9-12 Please refer to the link for information on the duration of each test. Test scores available in July 2024.	https://apcentral.collegeboard.org/
NJSLA (ELA, Math, Science) Grade 7- 9 (Alg I,Alg II, Geo)	April 29, 2024 - May 24 , 2024 (makeups May 28–May 31) Grades 7-9	https://nj.mypearsonsupport.com/ForParent/ https://www.nj.gov/education/assessment/resources/district/unit_test_times.shtml

New School Store Items Available Online

Show your Cougar spirit with this amazing new collection of items from the online school store!



SCAN TO SHOP



VISIT OUR WEBSITE
TWENTYFOURINK.COM/COLLECTIONS/KRHS

Click here to shop the new collection or scan the QR Code above

Important Upcoming Dates

- February 7: NCAA Signing Day #2
- February 8: SCCC Instant Decision Day
- February 12-16: Scheduling
- February 19: Presidents' Day: SCHOOL CLOSED
- February 21: Mid MP3

KIT TATINNY REGIONAL HIGH SCHOOL |
[\[www.krhs.net\]](http://www.krhs.net)



Kittatinny High School | 77 Halsey Road, Newton, NJ 07860

[Unsubscribe bboswort@krhs.net](mailto:bboswort@krhs.net)

[Update Profile](#) | [Constant Contact Data Notice](#)

Sent by kittatinnynews@krhs.net powered by



Try email marketing for free today!